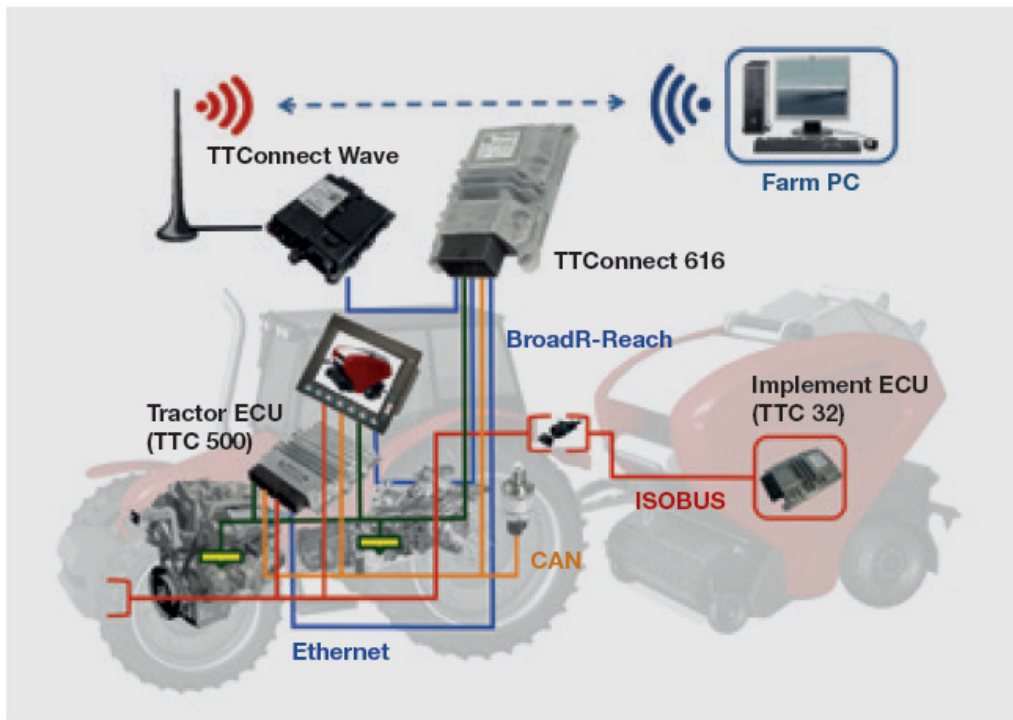
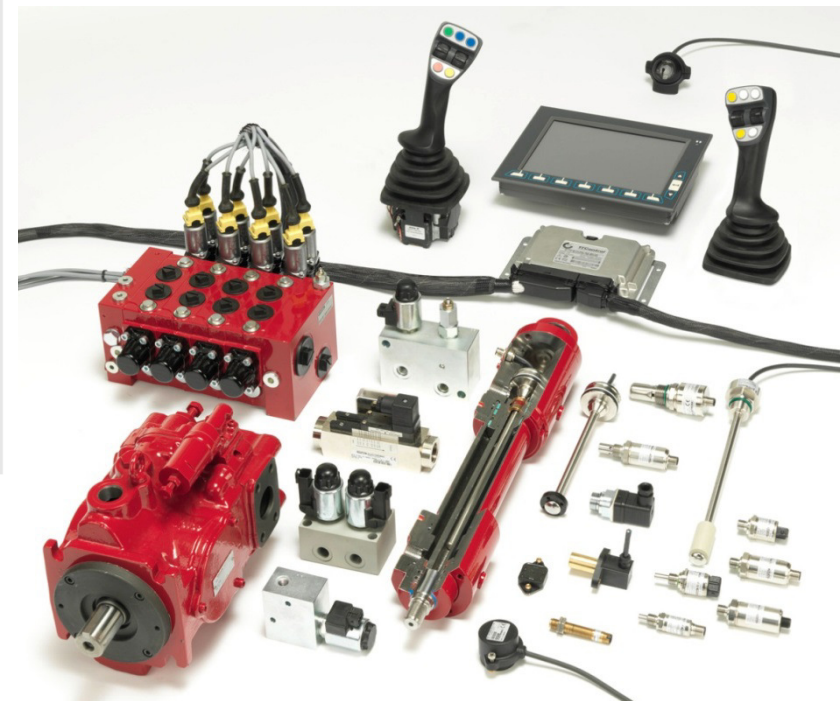


Mobilhydraulik Area / 行動液壓領域



HYDAC Mo-
bilhydraulik



An extensive product range with corresponding interfaces is available for internal machine communication and external communication of digital data.

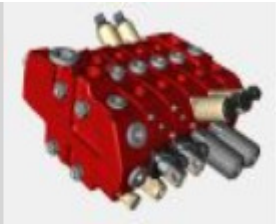
- ISOBUS communication:
HY-TTC 30, HY-TTC 77, HY-TTC 90, HY-TTC 500
- CAN communication: sensors, controls and displays
- Internal data management (CAN Ethernet Gateway): TTConnect 616
- External data communication: TTConnect Wave



HYDAC INTERNATIONAL

Mobilhydraulik Area / 行動液壓領域

HYDAC Mo-
bilhydraulik



System Intelligence

MATCH

	HMI
	CONTROL LEVEL
	SENSOR AND ACTUATOR LEVEL

Electronic actuators for different system concepts and structures in the machine. Controllers and I/O add-on modules available as standard models and models with increased functional safety. Displays with optimum readability even in difficult lighting conditions provide high performance and flexibility.

With the MATCH (Machine Application Tool Chain) development software development, HYDAC offers a tool chain for system-level software development by the customer that is specially suited to the requirements of mobile machinery. MATCH supports development from defining the system at the vehicle level and creating the application software for start-up, testing, and documentation.



HYDAC INTERNATIONAL

Mobilhydraulik Area / 行動液壓領域

Depth Control



Angle sensor HAT 1000

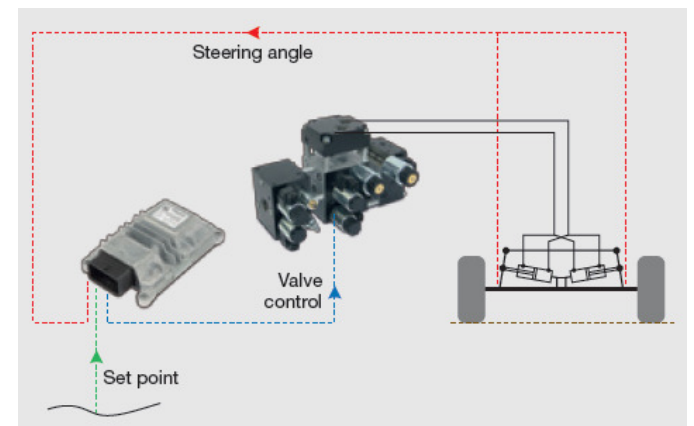
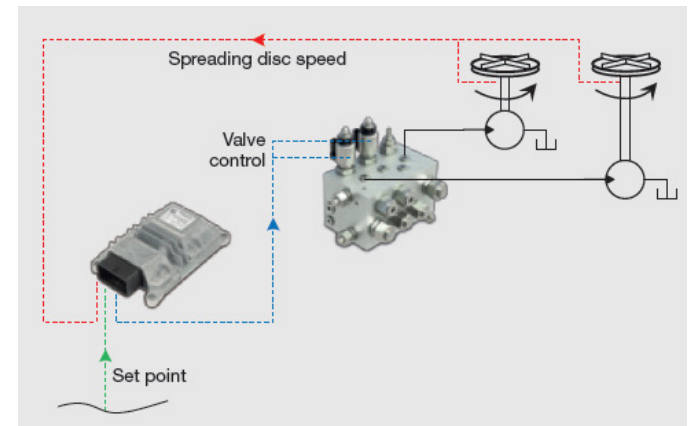
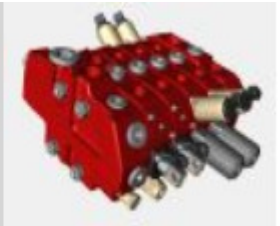


Linear position sensor HLT 700

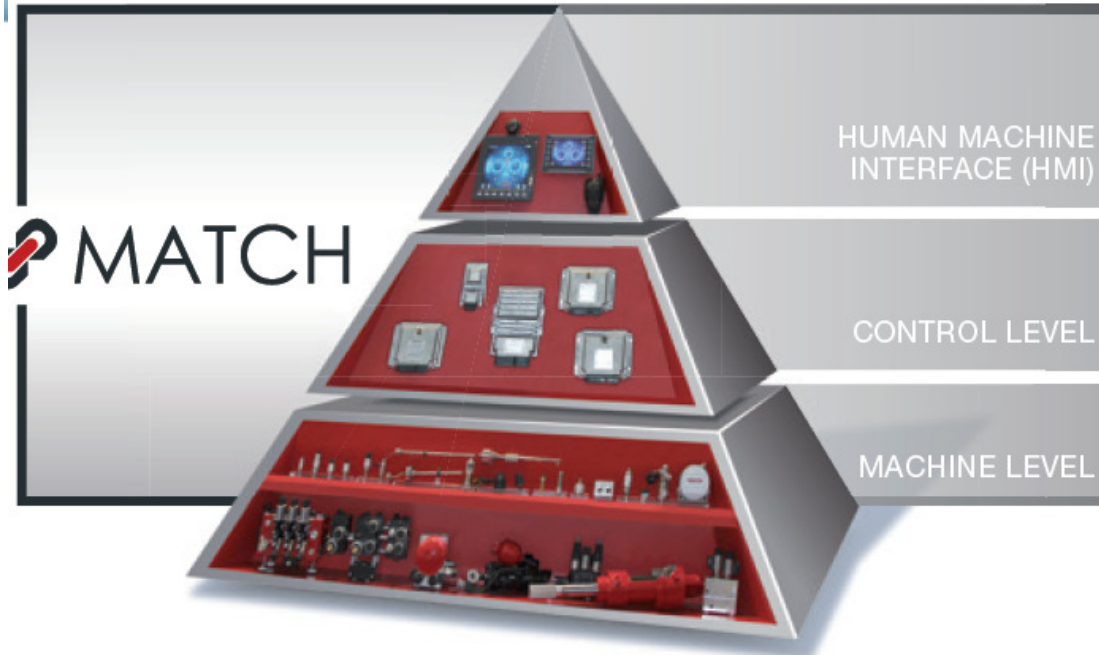
Hydraulic closed-loop position control by electrohydraulic control of depth control cylinders.

- Optimum work quality and maximum area capacity thanks to sensor-controlled depth guidance using angle sensors or linear position measurement systems integrated in the cylinder
- Working depth can be adjusted on basis of geo-reference data or manually when changing from heavy to light soils
- Optimum fuel consumption thanks to consistent depth control
- Reduces workload for tractor driver

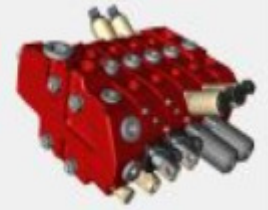
HYDAC Mobilhydraulik



Mobilhydraulik Area / 行動液壓領域



HYDAC Mo-
bilhydraulik



- Displays for the most demanding visual requirements
- Peripherals, e.g. joysticks

- Controllers in various classes
- I/O expansion modules
- Standard version and versions with increased functional safety available

Sensor level

- Pressure and temperature
- Distance, position, angle, tilt and level
- Drive speed
- Flow and oil level
- Standard version and versions with diagnostics and increased functional safety available

Actuator level

- Pilot-controlled and direct-acting valves
- Manifolds (monoblock/sandwich)
- Pilot and main controls
- Intelligent axles
- Cylinders, pumps and motors

